

Carving a capricorn

Michael Schaefer

2016

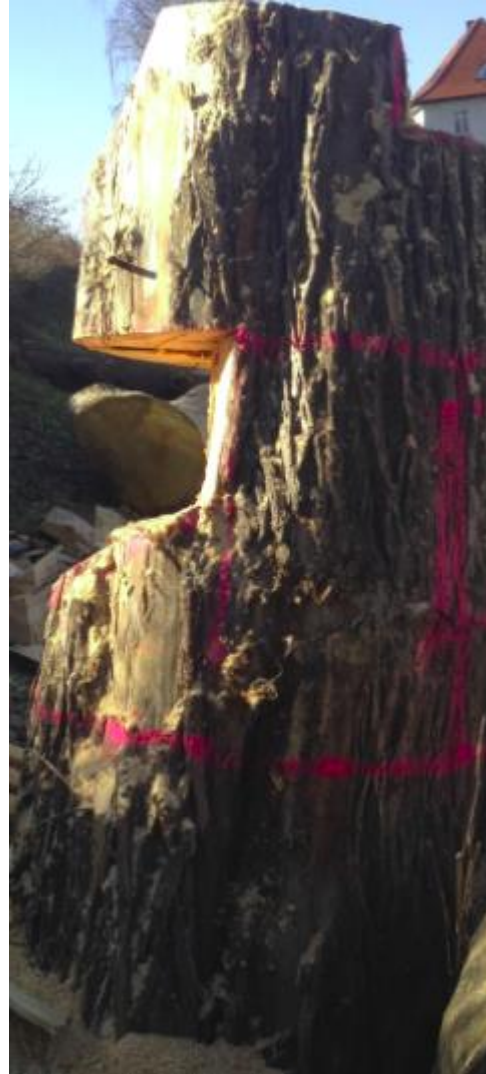
www.schwaebische-kettensaege.de

Long story short



If you want to make a big sculpture, you'll need a huge stump, 2m height and 80cm in diameter



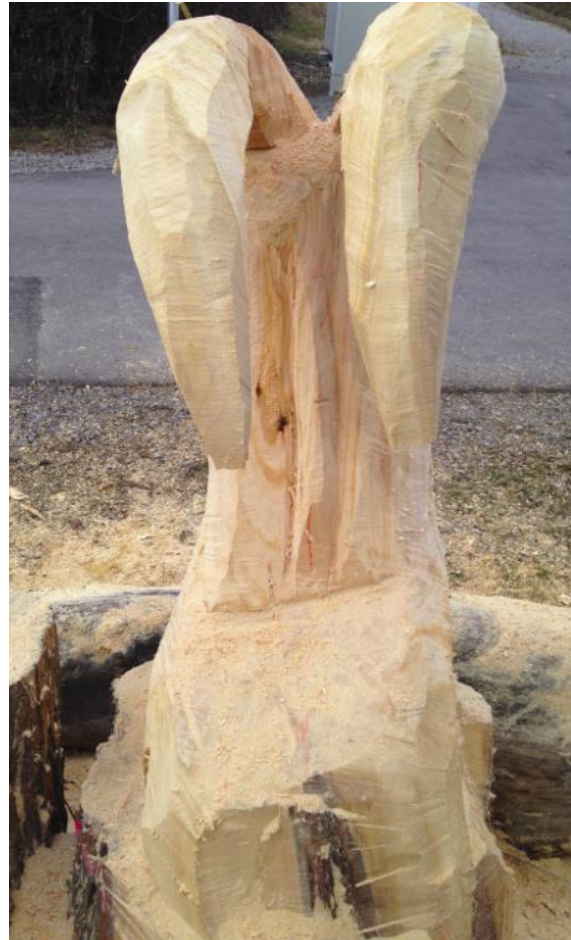


Get started by proper planning and sketching. Remove the big parts first, trying to get some structure into the wood.

Actually you'll need some infrastructure like ladders or, at least, some other stumps to get to the top....



Try get some details done, take care that it'll not break apart....



Use the grinder to sharpen the surface....





Somehow I am happy with the result, however, his face is not perfect yet

